

## Apolipoprotein E Recombinant antibody

**Cat:** B35056D

**Company:** HaoKebio

**Uniprot ID:** P02649

**Applications:** IHC:1:200-1:1000

**Organism:** Rabbit

IHC-Polymer:1:800-1:4000

**Species reactivity:** Human

IHC-TSA:1:1000-1:5000

**Molecular Weight Calculation:** 36 kDa

IF:1:50

**Observed Molecular Weight:** 36 kDa

WB:1:1000-1:5000

### Background:

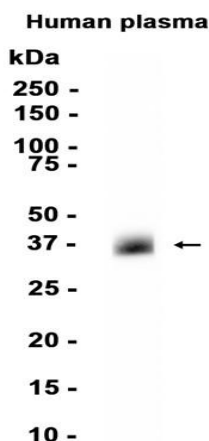
Store at -20 °C for one year.

The protein encoded by this gene is a major apoprotein of the chylomicron. It binds to a specific liver and peripheral cell receptor, and is essential for the normal catabolism of triglyceride-rich lipoprotein constituents. This gene maps to chromosome 19 in a cluster with the related apolipoprotein C1 and C2 genes. Mutations in this gene result in familial dysbetalipoproteinemia, or type III hyperlipoproteinemia (HLP III), in which increased plasma cholesterol and triglycerides are the consequence of impaired clearance of chylomicron and VLDL remnants.

### Experimental procedure:

Antigen retrieval: Citrate buffer (pH 9.0) , Medium high heat for 8 minutes, stop for 7 minutes, medium high heat for 8 minutes. Incubate antibody, 4°C overnight. Secondary antibody: Poly-HRP Goat Anti-Rabbit & Mouse Universal Secondary Antibody, RT, 1h.

### Images:



Dilution of 1:5000 incubated at room temperature for 1.5 hours.

### Source of Reagents:

发表[中文论文]请标注:Apolipoprotein E(B35056D)由杭州浩克生物技术有限公司提供;

发表[英文论文]请标注:Apolipoprotein E(B35056D) were kindly provided by Hangzhou Haoke Biotechnology Co., Ltd.

### Protein full name:

Apolipoprotein E

### Synonyms:

AD2; LPG; APO-E; ApoE4; LDLQC5

### Immunogen:

Recombinant protein

### Isotype:

IgG

### Subcellular location:

Cytoplasm, Secrete

### Purity:

Affinity purification

### Form:

Liquid

### Storage Buffer:

PBS with 0.02% sodium azide, 100 µg/ml BSA and 50% glycerol.

### Storage: