

Myosin light chain 3 Recombinant antibody

Cat:B35053D

Company: HaoKebio

Uniprot ID:P08590

Applications: IHC:1:100-1:200

Organism:Rabbit

IHC-Polymer:1:400-1:800

Species reactivity:Human Mouse Rat

IHC-TSA:1:500-1:1000

Molecular Weight Calculation: 22 kDa

WB:1:1000-1:5000

Observed Molecular Weight: 22 kDa

Background:

MYL3 encodes myosin light chain 3, an alkali light chain also referred to in the literature as both the ventricular isoform and the slow skeletal muscle isoform. Mutations in MYL3 have been identified as a cause of mid-left ventricular chamber type hypertrophic cardiomyopathy.

Protein full name:

Myosin Light Chain 3, MLC3

Synonyms:

CMH8; VLC1; VLCI; MLC1V; MLC1SB; MLC-IV/sb

Immunogen:

Recombinant protein

Isotype:

IgG

Subcellular location:

Cytoplasm

Purity:

Affinity purification

Form:

Liquid

Storage Buffer:

PBS with 0.02% sodium azide, 100 µg/ml BSA and 50% glycerol.

Storage:

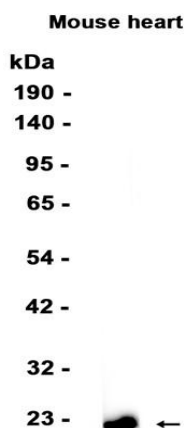
Store at -20 °C for one year.

Experimental procedure:

Antigen retrieval: Citrate buffer (pH 9.0), Medium high heat for 8 minutes, stop for 7 minutes, medium

dium high heat for 8 minutes. Incubate antibody, 4°C overnight. Secondary antibody: Poly-HRP Goat Anti-Rabbit & Mouse Universal Secondary Antibody, RT, 1h.

Images:



Dilution of 1:5000 incubated at room temperature for 1.5 hours.

Source of Reagents:

发表[中文论文]请标注:Myosin light chain 3(B35053D)由杭州浩克生物技术有限公司提供;

发表[英文论文]请标注:Myosin light chain 3(B35053D) were kindly provided by Hangzhou Haoke Biotechnology Co., Ltd.