

MEF2B Recombinant antibody

Cat: B35043D

Company: HaoKebio

Uniprot ID: Q02080

Applications: IHC:1:200-1:500

Organism: Rabbit

IHC-Polymer:1:800-1:2000

Species reactivity: Human

IHC-TSA:1:1000-1:2500

Molecular Weight Calculation: 39 kDa

WB:1:1000

Observed Molecular Weight: 39 kDa

Background:

The product of this gene is a member of the MADS/MEF2 family of DNA binding proteins. The protein is thought to regulate gene expression, including expression of the smooth muscle myosin heavy chain gene. This region undergoes considerable alternative splicing, with transcripts supporting two non-overlapping loci (GeneID 729991 and 100271849) as well as numerous read-through transcripts that span both loci (annotated as GeneID 4207). Several isoforms of this protein are expressed from either this locus or from some of the read-through transcripts annotated on GeneID 4207.

Protein full name:

Myocyte Enhancer Factor 2B

Synonyms:

RSRFR2

Immunogen:

Recombinant protein

Isotype:

IgG

Subcellular location:

Nucleus

Purity:

Affinity purification

Form:

Liquid

Storage Buffer:

PBS with 0.02% sodium azide, 100 µg/ml BSA and 50% glycerol.

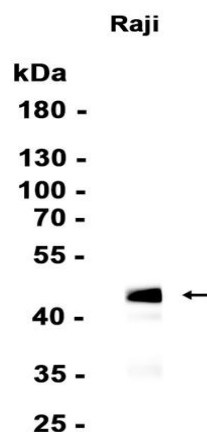
Storage:

Store at -20 °C for one year.

Experimental procedure:

Antigen retrieval: Citrate buffer (pH 9.0) , Medium high heat for 8 minutes, stop for 7 minutes, medium high heat for 8 minutes. Incubate antibody, 4°C overnight. Secondary antibody: Poly-HRP Goat Anti-Rabbit & Mouse Universal Secondary Antibody, RT, 1h.

Images:



Dilution of 1:1000 incubated at room temperature for 1.5 hours.

Source of Reagents:

发表[中文论文]请标注:MEF2B(B35043D)由杭州浩克生物技术有限公司提供;

发表[英文论文]请标注:MEF2B(B35043D) were kindly provided by Hangzhou Haoke Biotechnology Co., Ltd.