

# Insulin Receptor beta Recombinant antibody

**Cat:**B35038D

**Company:** HaoKebio

**Uniprot ID:**P06213

**Applications:** IHC:1:200-1:500

**Organism:**Rabbit

IHC-Polymer:1:800-1:2000

**Species reactivity:**Human

IHC-TSA:1:1000-1:2500

**Molecular Weight Calculation:** 95 kDa

WB:1:1000

**Observed Molecular Weight:** 95 kDa

## Background:

This gene encodes a member of the receptor tyrosine kinase family of proteins. The encoded preproprotein is proteolytically processed to generate alpha and beta subunits that form a heterotetrameric receptor. Binding of insulin or other ligands to this receptor activates the insulin signaling pathway, which regulates glucose uptake and release, as well as the synthesis and storage of carbohydrates, lipids and protein. Mutations in this gene underlie the inherited severe insulin resistance syndromes including type A insulin resistance syndrome, Donohue syndrome and Rabson-Mendenhall syndrome. Alternative splicing results in multiple transcript variants.

## Protein full name:

Insulin Receptor Beta Subunit

## Synonyms:

HHF5; CD220

## Immunogen:

Recombinant protein

## Isotype:

IgG

## Subcellular location:

Membrane

## Purity:

Affinity purification

## Form:

Liquid

## Storage Buffer:

PBS with 0.02% sodium azide, 100 µg/ml BSA and 50% glycerol.

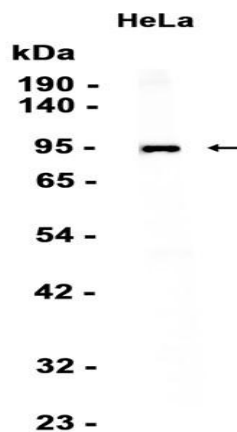
## Storage:

Store at -20 °C for one year.

## Experimental procedure:

Antigen retrieval: Citrate buffer (pH 9.0), Medium high heat for 8 minutes, stop for 7 minutes, medium high heat for 8 minutes. Incubate antibody, 4°C overnight. Secondary antibody: Poly-HRP Goat Anti-Rabbit & Mouse Universal Secondary Antibody, RT, 1h.

## Images:



Dilution of 1:1000 incubated at room temperature for 1.5 hours.

## Source of Reagents:

发表[中文论文]请标注:Insulin Receptor beta(B35038D)由杭州浩克生物技术有限公司提供;

发表[英文论文]请标注:Insulin Receptor beta(B35038D) were kindly provided by Hangzhou Haoke Biotechnology Co., Ltd.