

C4 binding protein Recombinant antibody

Cat: B35030D

Company: HaoKebio

Uniprot ID: P20851

Applications: IHC:1:200-1:1000

Organism: Rabbit

IHC-Polymer:1:800-1:4000

Species reactivity: Human Rat

IHC-TSA:1:1000-1:5000

Molecular Weight Calculation: 28 kDa

IF:1:50

Observed Molecular Weight: 40 kDa

WB:1:1000

Background:

This gene encodes a member of a superfamily of proteins composed predominantly of tandemly arrayed short consensus repeats of approximately 60 amino acids. A single, unique beta-chain encoded by this gene assembles with seven identical alpha-chains into the predominant isoform of C4b-binding protein, a multimeric protein that controls activation of the complement cascade through the classical pathway. C4b-binding protein has a regulatory role in the coagulation system also, mediated through the beta-chain binding of protein S, a vitamin K-dependent protein that serves as a cofactor of activated protein C. The genes encoding both alpha and beta chains are located adjacent to each other on human chromosome 1 in the regulator of complement activation gene cluster. Alternative splicing gives rise to multiple transcript variants.

Protein full name:

Complement Component 4 Binding Protein

Synonyms:

C4BP

Immunogen:

Recombinant protein

Isotype:

IgG

Subcellular location:

Secrete

Purity:

Affinity purification

Form:

Liquid

Storage Buffer:

PBS with 0.02% sodium azide, 100 µg/ml BSA and 50% glycerol.

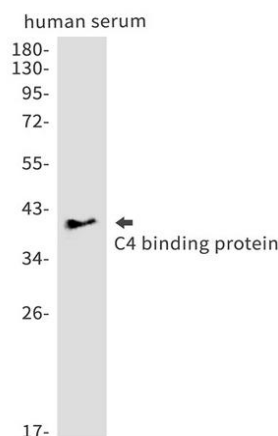
Storage:

Store at -20 °C for one year.

Experimental procedure:

Antigen retrieval: Citrate buffer (pH 9.0), Medium high heat for 8 minutes, stop for 7 minutes, medium high heat for 8 minutes. Incubate antibody, 4°C overnight. Secondary antibody: Poly-HRP Goat Anti-Rabbit & Mouse Universal Secondary Antibody, RT, 1h.

Images:



Dilution of 1:1000 incubated at room temperature for 1.5 hours.

Source of Reagents:

发表[中文论文]请标注:C4 binding protein(B35030D)由杭州浩克生物技术有限公司提供;

发表[英文论文]请标注:C4 binding protein(B35030D) were kindly provided by Hangzhou Haoke Biotechnology Co., Ltd.