

## Carcino Embryonic Antigen CEA Recombinant antibody

**Cat:** B35027D

**Company:** HaoKebio

**Uniprot ID:** P06731

**Applications:** IHC:1:2000-1:20000

**Organism:** Rabbit

IHC-Polymer:1:8000-1:80000

**Species reactivity:** Human

IHC-TSA:1:10000-1:100000

**Molecular Weight Calculation:** 77 kDa

IF:1:100-1:1000

**Observed Molecular Weight:** 180-200 kDa

WB:1:1000

### Background:

This gene encodes a cell surface glycoprotein that represents the founding member of the carcinoembryonic antigen (CEA) family of proteins. The encoded protein is used as a clinical biomarker for gastrointestinal cancers and may promote tumor development through its role as a cell adhesion molecule. Additionally, the encoded protein may regulate differentiation, apoptosis, and cell polarity. This gene is present in a CEA family gene cluster on chromosome 19. Alternative splicing results in multiple transcript variants.

### Protein full name:

Carcinoembryonic Antigen

### Synonyms:

CEA; CD66e

### Immunogen:

Recombinant protein

### Isotype:

IgG

### Subcellular location:

Membrane

### Purity:

Affinity purification

### Form:

Liquid

### Storage Buffer:

PBS with 0.02% sodium azide, 100 µg/ml BSA and 50% glycerol.

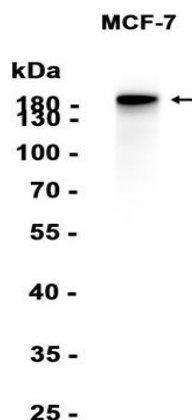
### Storage:

Store at -20 °C for one year.

### Experimental procedure:

Antigen retrieval: Citrate buffer (pH 9.0), Medium high heat for 8 minutes, stop for 7 minutes, medium high heat for 8 minutes. Incubate antibody, 4°C overnight. Secondary antibody: Poly-HRP Goat Anti-Rabbit & Mouse Universal Secondary Antibody, RT, 1h.

### Images:



Dilution of 1:1000 incubated at room temperature for 1.5 hours.

### Source of Reagents:

发表[中文论文]请标注:Carcino Embryonic Antigen CEA(B35027D)由杭州浩克生物技术有限公司提供;

发表[英文论文]请标注:Carcino Embryonic Antigen CEA(B35027D) were kindly provided by Hangzhou Haoke Biotechnology Co., Ltd.