

SIGNR1 Recombinant antibody

Cat: B36196S

Company: HaoKebio

Uniprot ID: Q8CJ91-1

Applications: IHC:1:2000-1:8000

Organism: Rabbit

IHC-Polymer:1:8000-1:32000

Species reactivity: Mouse

IHC-TSA:1:10000-1:40000

Molecular Weight Calculation: 37 kDa

IF:1:100-1:400

Observed Molecular Weight: 45-50 kDa

WB:1:5000-1:50000

Background:

SIGNR1 (CD209b) is a mouse homolog of the human DC-SIGN receptor. SIGNR1 is a type II transmembrane protein with an extracellular domain consisting of a neck region made up of four repeats of 28 amino acids and a carbohydrate recognition domain. It is expressed on marginal zone macrophages and peritoneal macrophages and is a key receptor for the recognition and efficient clearance of pathogens by the innate immune system.

Synonyms:

241726B1, CD209, CD209 antigen-like protein B, Cd209b, DC-SIGNR1

Immunogen:

Recombinant protein

Isotype:

IgG

Subcellular location:

Membrane

Purity:

Affinity purification

Form:

Liquid

Storage Buffer:

PBS with 0.02% sodium azide, 100 µg/ml BSA and 50% glycerol.

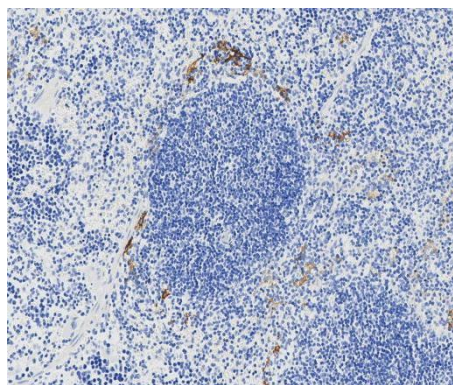
Storage:

Store at -20 °C for one year.

Experimental procedure:

Antigen retrieval: Citrate buffer (pH 9.0) , Medium high heat for 8 minutes, stop for 7 minutes, medium high heat for 8 minutes. Incubate antibody, 4°C overnight. Secondary antibody: Poly-HRP Goat Anti-Rabbit & Mouse Universal Secondary Antibody, RT, 1h.

Images:



Sample: Mouse spleen, 4% PFA 12-24h

Source of Reagents:

发表[中文论文]请标注:SIGNR1(B36196S)由杭州浩克生物技术有限公司提供;

发表[英文论文]请标注:SIGNR1(B36196S) were kindly provided by Hangzhou Haoke Biotechnology Co., Ltd.