

MYC tag Monoclonal antibody

Cat: B30008T

Company: HaoKebio

Uniprot ID: MYCTAG

Applications: IF/ICC:1:500-1:2000

Organism: Mouse

WB: 1:2500-1:25000

Species reactivity: Recombinant protein

IP: 1ug for 1mg of total protein lysate

FC: 1:50-1:200

Background:

Protein tags are protein or peptide sequences located either on the C- or N- terminal of the target protein, which facilitates one or several of the following characteristics: solubility, detection, purification, localization and expression. The c-Myc tag corresponds to amino acid residues(EQKLISEEDL) of the human c-Myc protein. It can be used for affinity chromatography, then used to separate recombinant, overexpressed protein from wild type protein expressed by the host organism. It can also be used in the isolation of protein complexes with multiple subunits. Myc-Tag mouse mAb detects recombinant proteins containing the Myc tag. The antibody recognizes the Myc-tag EQKLISEEDL fused to either the amino- or carboxy- terminus of targeted proteins.

Synonyms:

myc, EQKLISEEDL, MYC-tag

Immunogen:

Peptide

Isotype:

IgG1

Purity:

Protein G purification

Form:

Liquid

Storage Buffer:

PBS with 0.02% sodium azide, 100 µg/ml BSA and 50% glycerol.

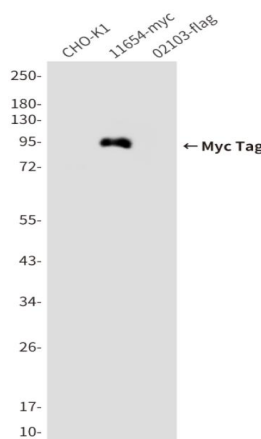
Storage:

Store at -20 °C for one year.

Experimental procedure:

Antigen retrieval: Citrate buffer (pH 9.0) , Medium high heat for 8 minutes, stop for 7 minutes, medium high heat for 8 minutes. Incubate antibody, 4°C overnight. Secondary antibody: Poly-HRP Goat Anti-Rabbit & Mouse Universal Secondary Antibody, RT, 1h.

Images:



Dilution of 1:25000 incubated at room temperature for 1.5 hours.

Source of Reagents:

发表[中文论文]请标注:MYC tag(B30008T)由杭州浩克生物技术有限公司提供;

发表[英文论文]请标注:MYC tag(B30008T) were kindly provided by Hangzhou Haoke Biotechnology Co., Ltd.