

PIN1 Recombinant antibody

Cat:B36179S

Company: HaoKebio

Uniprot ID:Q13526

Applications: IHC:1:500-1:2000

Organism:Rabbit

IHC-Polymer:1:2000-1:8000

Species reactivity:Human Mouse Rat

IHC-TSA:1:2500-1:10000

Molecular Weight Calculation: 18 kDa

IF:1:50-1:100

Observed Molecular Weight: 18 kDa

WB:1:5000-1:50000

IP:1ug for 1mg of total protein lysate

Background:

PIN1(Peptidyl-prolyl cis-trans isomerase NIMA-interacting 1) is essential for mitosis progression in yeast cells and is hypothesized to perform the same role in mammalian cells. It might regulate cellular processes distinct from the cell cycle itself, such as terminal differentiation through a modulation of differentiation-specific gene expression. It colocalizes with NEK6 in the nucleus. Pin1 inhibition simultaneously blocks multiple cancer pathways, disrupts the desmoplastic and immunosuppressive TME, and upregulates PD-L1 and ENT1, rendering pancreatic ductal adenocarcinoma (PDAC) eradicable by immunochemotherapy.

Synonyms:

Pin 1, Peptidyl-prolyl cis-trans isomerase Pin1, Peptidyl-prolyl cis-trans isomerase NIMA-interacting 1, EC:5.2.1.8, 5N20

Immunogen:

Recombinant protein

Isotype:

IgG

Subcellular location:

Cytoplasm,Nucleus

Purity:

Affinity purification

Form:

Liquid

Storage Buffer:

PBS with 0.02%sodium azide,100 µg/ml BSA and 50% glycerol.

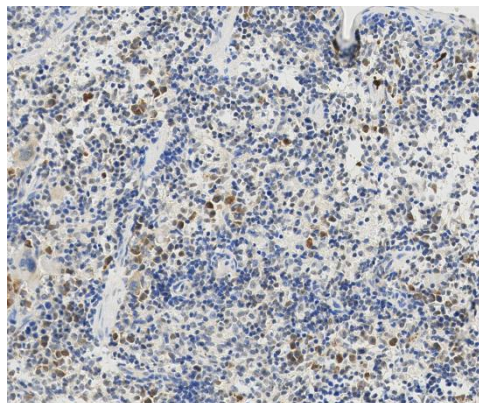
Storage:

Store at -20 °C for one year.

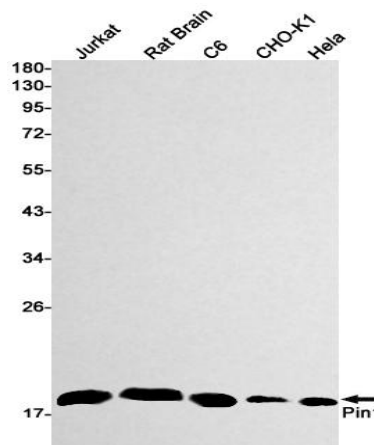
Experimental procedure:

Antigen retrieval: Citrate buffer (pH 9.0) , Medium high heat for 8 minutes, stop for 7 minutes, medium high heat for 8 minutes. Incubate antibody, 4°C overnight. Secondary antibody: Poly-HRP Goat Anti-Rabbit & Mouse Universal Secondary Antibody, RT, 1h.

Images:



Sample: Mouse tumor, 4% PFA 12-24h



Dilution of 1:50000 incubated at room temperature for 1.5 hours.

Source of Reagents:

发表[中文论文]请标注:PIN1(B36179S)由杭州
浩克生物技术有限公司提供;

发表[英文论文]请标注:PIN1(B36179S) were ki
ndly provided by Hangzhou Haoke Biotechnolog
y Co., Ltd.