

## IGF2BP2 Recombinant antibody

**Cat:**B36162S

**Company:** HaoKebio

**Uniprot ID:**Q9Y6M1

**Applications:** IHC:1:500-1:2000

**Organism:**Rabbit

IHC-Polymer:1:2000-1:8000

**Species reactivity:**Human Mouse Rat

IHC-TSA:1:2500-1:10000

**Molecular Weight Calculation:** 65 kDa

IF:1:50-1:100

**Observed Molecular Weight:** 55-65 kDa

WB:1:2000-1:10000

IP:1ug for 1mg of total protein lysate

### Background:

Insulin-like growth factor 2 mRNA-binding protein 2(IGF2BP2), is a member of a family of mRNA binding protein, which can bind to several mammalian cells' mRNAs. Thus it may involve in the regulation of translation of mRNA. IGF2BP2's polymorphisms is risk factor for developing type 2 diabetes. This antibody raise against part of N-terminus of human IGF2BP2. IGF2BP2 has some isoforms with the MW of 54-66 kDa. Some literature has reported that multiple bands can be detected.

### Synonyms:

insulin like growth factor 2 mRNA binding protein 2, IMP-2, IMP2, IGF-II mRNA-binding protein 2, IGF2 mRNA-binding protein 2

### Immunogen:

Recombinant protein

### Isotype:

IgG

### Subcellular location:

Cytoplasm

### Purity:

Affinity purification

### Form:

Liquid

### Storage Buffer:

PBS with 0.02%sodium azide,100 µg/ml BSA and 50% glycerol.

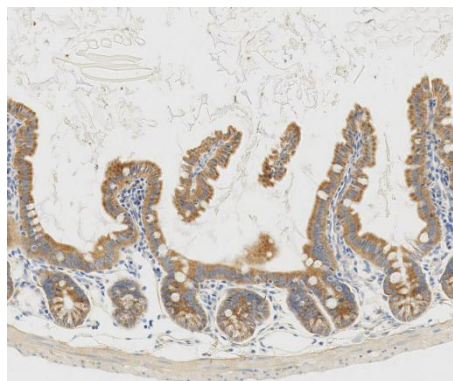
### Storage:

Store at -20 °C for one year.

### Experimental procedure:

Antigen retrieval: Citrate buffer (pH 9.0) , Medium high heat for 8 minutes, stop for 7 minutes, medium high heat for 8 minutes.Incubate antibody, 4°C overnight.Secondary antibody: Poly-HRP Goat Anti-Rabbit & Mouse Universal Secondary Antibody, RT, 1h.

### Images:



Sample: Mouse intestine, 4% PFA 12-24h

### Source of Reagents:

发表[中文论文]请标注:IGF2BP2(B36162S)由杭州浩克生物技术有限公司提供;

发表[英文论文]请标注:IGF2BP2(B36162S) were kindly provided by Hangzhou Haoke Biotechnology Co., Ltd.