

Ferritin light chain 1 Recombinant antibody

Cat:B36152S

Company: HaoKebio

Uniprot ID:P02793

Applications: IHC:1:250-1:1000

Organism:Rabbit

IHC-Polymer:1:1000-1:4000

Species reactivity:Mouse Rat

IHC-TSA:1:1200-1:5000

Molecular Weight Calculation: 21 kDa

IF:1:50-1:100

Observed Molecular Weight: 18-20 kDa

WB:1:5000-1:50000

Background:

FTL belongs to the ferritin family. It stores iron in a soluble, non-toxic, readily available form. FTL is important for iron homeostasis. It plays a role in delivery of iron to cells. FTL mediates iron uptake in capsule cells of the developing kidney. Mutation of FTL will cause hereditary hyperferritinemia-cataract syndrome (HHCS) or neurodegeneration with brain iron accumulation type 3 (NBIA3). Ferritin light polypeptide (FTL) and ferritin heavy polypeptide (FTH1) were the main constituents the striatum and cerebellar cortex revealed.

Synonyms:

242299F7, Ferritin L subunit 1, Ftl, Ftl1

Immunogen:

Recombinant protein

Isotype:

IgG

Subcellular location:

Cytoplasm

Purity:

Affinity purification

Form:

Liquid

Storage Buffer:

PBS with 0.02% sodium azide, 100 µg/ml BSA and 50% glycerol.

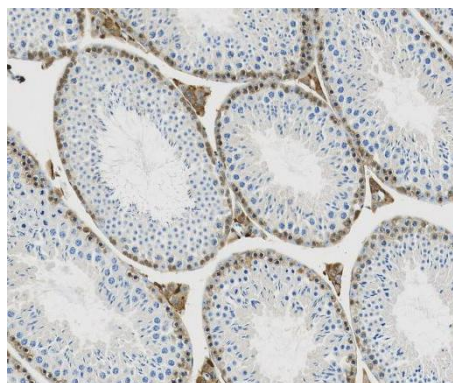
Storage:

Store at -20 °C for one year.

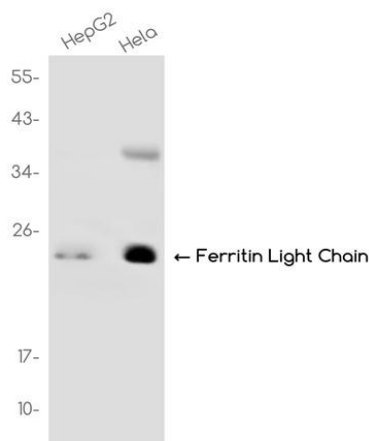
Experimental procedure:

Antigen retrieval: Citrate buffer (pH 9.0) , Medium high heat for 8 minutes, stop for 7 minutes, medium high heat for 8 minutes. Incubate antibody, 4°C overnight. Secondary antibody: Poly-HRP Goat Anti-Rabbit & Mouse Universal Secondary Antibody, RT, 1h.

Images:



Sample: Mouse testis, 4% PFA 12-24h



Dilution of 1:50000 incubated at room temperature for 1.5 hours.

Source of Reagents:

发表[中文论文]请标注:Ferritin light chain 1(B36152S)由杭州浩克生物技术有限公司提供;

发表[英文论文]请标注:Ferritin light chain 1(B36152S) wer



phone: 0571-86715009 Website: www.haokebio.com

e kindly provided by Hangzhou Haoke Biotechno
logy Co., Ltd.