

## HRP-conjugated 6His, His-Tag Monoclonal antibody

**Cat:** B30001T-HRP

**Company:** HaoKebio

**Uniprot ID:** HISTAG

**Applications:**

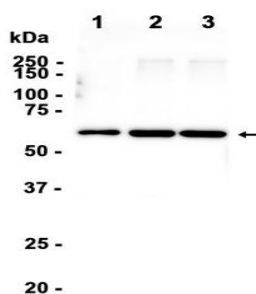
WB:1:2500-1:25000

**Organism:** Mouse

**Species reactivity:** Recombinant protein

### Background:

Protein tags are a protein or peptide sequences located either on the C- or N- terminal of the target protein. His-tag is often used for affinity purification and binding assays. Expressed. The His-tag antibody is a useful tool for monitoring of the His-tagged proteins and recognizes His-tags placed at N-terminal, C-terminal, and internal regions of fusion proteins expressed in bacteria, insect, and mammalian cells. A His-tag (polyhistidine tag) consists of at least six histidine residues that are located at the N- or C-terminus of recombinant proteins. It is commonly used for affinity purification and protein binding experiments.



1. Multi-tag Protein  
 2. Multi-tag Protein in 293  
 3. Multi-tag Protein in HeLa

Dilution of 1:25000 incubated at room temperature for 1.5 hours.

### Source of Reagents:

发表[中文论文]请标注:HRP-conjugated 6His, His-Tag(B30001T-HRP)由杭州浩克生物技术有限公司提供;

发表[英文论文]请标注:HRP-conjugated 6His, His-Tag(B30001T-HRP) were kindly provided by Hangzhou Haoke Biotechnology Co., Ltd.

### Protein full name:

6\*His, His-Tag

### Synonyms:

6\*His, His Tag, His Tag, 6\*His, 6\*his tag, 6\*his, His tag

### Immunogen:

6xHis Peptide

### Isotype:

IgG1

### Purity:

Protein G purification

### Form:

Liquid

### Storage Buffer:

PBS with 50% glycerol, 0.05% Proclin300, 0.5% BSA, pH 7.3

### Storage:

Store at -20 °C for one year.

### Images: