

CytokeRin 20 Recombinant antibody

Cat:B36143S

Company: HaoKebio

Uniprot ID:P35900

Applications: IHC:1:3000-1:12000

Organism:Rabbit

IHC-Polymer:1:12000-1:50000

Species reactivity:Human Mouse Rat

IHC-TSA:1:15000-1:60000

Molecular Weight Calculation: 424 aa, 48 kDa

IF:1:150-1:600

Observed Molecular Weight: 46 kDa

WB:1:5000-1:50000

FC:1:100-1:500

Background:

Keratins are a large family of proteins that form the intermediate filament cytoskeleton of epithelial cells, which are classified into two major sequence types. Type I keratins are a group of acidic intermediate filament proteins, including K9-K23, and the hair keratins Ha1-Ha8. Type II keratins are the basic or neutral counterparts to the acidic type I keratins, including K1-K8, and the hair keratins, Hb1-Hb6. Keratin 20 is a type I cytokeratin. It is a major cellular protein of mature enterocytes and goblet cells and is specifically found in the gastric and intestinal mucosa.

Synonyms:

,
KRT20, CK 20, CK20, CK-20, Cytokeratin-20

Immunogen:

Recombinant protein

Isotype:

IgG

Subcellular location:

Cytoplasm

Purity:

Affinity purification

Form:

Liquid

Storage Buffer:

PBS with 0.02% sodium azide, 100 µg/ml BSA and 50% glycerol.

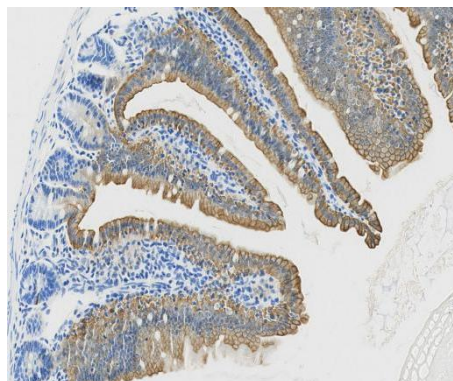
Storage:

Store at -20 °C for one year.

Experimental procedure:

Antigen retrieval: Citrate buffer (pH 9.0) , Medium high heat for 8 minutes, stop for 7 minutes, medium high heat for 8 minutes. Incubate antibody, 4°C overnight. Secondary antibody: Poly-HRP Goat Anti-Rabbit & Mouse Universal Secondary Antibody, RT, 1h.

Images:



Sample: Mouse intestine, 4% PFA 12-24h

Source of Reagents:

发表[中文论文]请标注:CytokeRin 20(B36143S)由杭州浩克生物技术有限公司提供;

发表[英文论文]请标注:CytokeRin 20(B36143S) were kindly provided by Hangzhou Haoke Biotechnology Co., Ltd.