

ATP2A1 Recombinant antibody

Cat:B36126S

Company: HaoKebio

Uniprot ID:O14983

Applications: IHC:1:125-1:500

Organism:Rabbit

IHC-Polymer:1:500-1:2000

Species reactivity:Human Mouse Rat

IHC-TSA:1:600-1:2500

Molecular Weight Calculation: 1001 aa, 110 kDa

WB:1:5000-1:50000

Observed Molecular Weight: 110 kDa

Background:

ATP2A1 also known as SERCA1, encodes one of the SERCA Ca(2+)-ATPases, which are intracellular pumps located in the sarcoplasmic or endoplasmic reticula of muscle cells. This enzyme catalyzes the hydrolysis of ATP coupled with the translocation of calcium from the cytosol to the sarcoplasmic reticulum lumen and is involved in muscular excitation and contraction. Mutations in ATP2A1 cause some autosomal recessive forms of Brody disease.

Synonyms:

241500D12, ATP2A, ATP2A 1, Calcium-transporting ATPase sarcoplasmic reticulum type, fast twitch skeletal muscle isoform, EC:7.2.2.10

Immunogen:

Recombinant protein

Isotype:

IgG

Subcellular location:

Cytoplasm

Purity:

Affinity purification

Form:

Liquid

Storage Buffer:

PBS with 0.02% sodium azide, 100 µg/ml BSA and 50% glycerol.

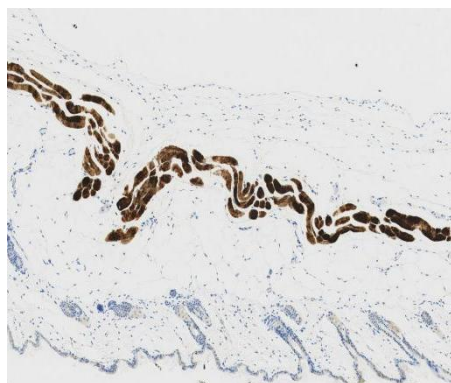
Storage:

Store at -20 °C for one year.

Experimental procedure:

Antigen retrieval: Citrate buffer (pH 9.0) , Medium high heat for 8 minutes, stop for 7 minutes, medium high heat for 8 minutes. Incubate antibody, 4°C overnight. Secondary antibody: Poly-HRP Goat Anti-Rabbit & Mouse Universal Secondary Antibody, RT, 1h.

Images:



Sample: Mouse skin, 4% PFA 12-24h

Source of Reagents:

发表[中文论文]请标注:ATP2A1(B36126S)由杭州浩克生物技术有限公司提供;

发表[英文论文]请标注:ATP2A1(B36126S) were kindly provided by Hangzhou Haoke Biotechnology Co., Ltd.