

TDP-43 (C-terminal) Recombinant antibody

Cat:B36121S

Company: HaoKebio

Uniprot ID:Q13148

Applications: IHC:1:1000-1:4000

Organism:Rabbit

IHC-Polymer:1:4000-1:16000

Species reactivity:Human Mouse Rat

IHC-TSA:1:5000-1:20000

Molecular Weight Calculation: 43 kDa

IF:1:50-1:200

Observed Molecular Weight: 43 kDa

WB:1:5000-1:50000

FC:1:100-1:500

Background:

The TARDBP gene encodes the TDP-43 protein, initially found to repress HIV-1 transcription by binding TAR DNA. TDP-43 has since been shown to bind RNA as well as DNA, and have multiple functions in transcriptional repression, translational regulation and pre-mRNA splicing. For instance, it is reported to regulate alternate splicing of the CTFR gene. In 2006 Neumann et al. found that hyperphosphorylated, ubiquitinated and/or cleaved forms of TDP-43, collectively known as pathological TDP-43, play a major role in the disease mechanisms of ubiquitin-positive, tau- and alpha-synuclein-negative frontotemporal dementia (FTLD-U) and in amyotrophic lateral sclerosis (ALS).

Synonyms:

TARDBP, TDP 43, TDP43, TDP-43, TAR DNA-binding protein 43

Immunogen:

Recombinant protein

Isotype:

IgG

Subcellular location:

Cytoplasm,Nucleus

Purity:

Affinity purification

Form:

Liquid

Storage Buffer:

PBS with 0.02%sodium azide,100 µg/ml BSA and 50% glycerol.

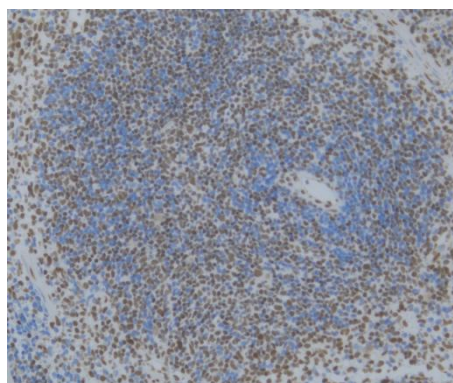
Storage:

Store at -20 °C for one year.

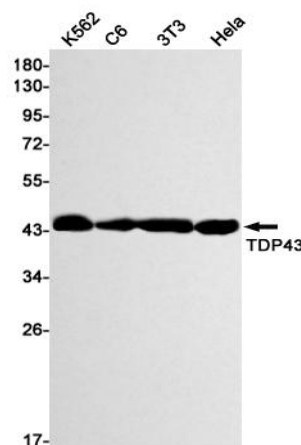
Experimental procedure:

Antigen retrieval: Citrate buffer (pH 9.0) , Medium high heat for 8 minutes, stop for 7 minutes, medium high heat for 8 minutes.Incubate antibody, 4°C overnight.Secondary antibody: Poly-HRP Goat Anti-Rabbit & Mouse Universal Secondary Antibody, RT, 1h.

Images:



Sample: Mouse spleen, 4% PFA 12-24h



Dilution of 1:50000 incubated at room temperature for 1.5 hours.

Source of Reagents:

For research use only. Not for use in diagnostic procedures.

发表[中文论文]请标注:TDP-43 (C-terminal)(B3
6121S)由杭州浩克生物技术有限公司提供;
发表[英文论文]请标注:TDP-43 (C-terminal)(B3
6121S) were kindly provided by Hangzho
u Haoke Biotechnology Co., Ltd.