

CLOCK Recombinant antibody

Cat: B36108S

Company: HaoKebio

Uniprot ID: O15516

Applications: IHC:1:200-1:800

Organism: Rabbit

IHC-Polymer:1:800-1:3200

Species reactivity: Human Mouse Rat

IHC-TSA:1:1000-1:4000

Molecular Weight Calculation: 846 aa, 95 kDa

WB:1:1000-1:8000

Observed Molecular Weight: 110 kDa

Background:

Circadian locomotor output cycles protein kaput (CLOCK), also named as BHLHE8 or KIAA0334, is a 846 amino acid protein, which contains one bHLH domain, one PAC domain, and two PAS domains. CLOCK localizes in the nucleus and cytoplasm. CLOCK is expressed in all tissues examined including spleen, thymus, prostate, testis, ovary, small intestine, colon, leukocytes, heart, brain, placenta, lung, liver, skeletal muscle, kidney and pancreas. ARNTL/2-CLOCK heterodimers activate E-box element (5'-CACGTG-3') transcription of a number of proteins of the circadian clock, such as PER1 and PER2. The calculated molecular weight of CLOCK is 95kDa, we detected a 95-110 kDa protein by western blot. Our result is similar to the result of research paper.

Synonyms:

1123, bHLHe8, Circadian locomotor output cycle protein kaput, Class E basic helix-loop-helix protein 8, EC:2.3.1.48

Immunogen:

Recombinant protein

Isotype:

IgG

Subcellular location:

Nucleus, Cytoplasm

Purity:

Affinity purification

Form:

Liquid

Storage Buffer:

PBS with 0.02% sodium azide, 100 µg/ml BSA and 50% glycerol.

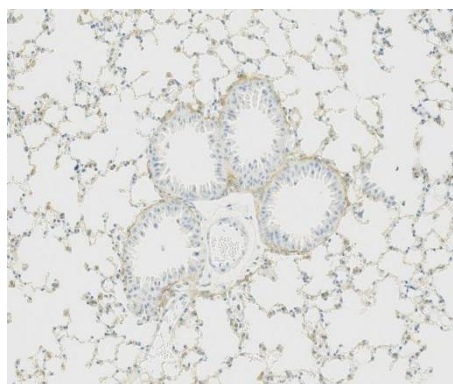
Storage:

Store at -20 °C for one year.

Experimental procedure:

Antigen retrieval: Citrate buffer (pH 9.0), Medium high heat for 8 minutes, stop for 7 minutes, medium high heat for 8 minutes. Incubate antibody, 4°C overnight. Secondary antibody: Poly-HRP Goat Anti-Rabbit & Mouse Universal Secondary Antibody, RT, 1h.

Images:



Sample: Mouse lung, 4% PFA 12-24h

Source of Reagents:

发表[中文论文]请标注:CLOCK(B36108S)由杭州浩克生物技术有限公司提供;

发表[英文论文]请标注:CLOCK(B36108S) were kindly provided by Hangzhou Haoke Biotechnology Co., Ltd.