

PLA2R Recombinant antibody

Cat:B32181R
Company: Haokebio

Uniprot ID:Q13018

Applications: IHC:1:100-1:200

Organism:Rabbit

IHC-Polymer:1:400-1:800

Species reactivity:Human

TSA:1:500-1:1000

Background:

Phospholipase A2 receptor (PLA2R) belongs to the type I transmembrane receptor family. PLA2R mainly consists of two subtypes: M-type and N-type. As a receptor for phospholipase sPLA2-IB/PLA2G1B, M-type PLA2R is also the primary target antigen of human autoantibodies (anti-phospholipase A2 receptor antibodies, Anti-PLA2R). In glomerular podocytes, the binding of M-type PLA2R to sPLA2-IB/PLA2G1B can regulate podocyte survival and glomerular homeostasis. PLA2R is highly expressed in human glomerular podocytes; it is also expressed in the pancreas, amnion, decidua, and placenta. Clinically, PLA2R serves as a biomarker primarily used for the diagnosis, therapeutic guidance, and prognostic evaluation of idiopathic membranous nephropathy.

Protein full name:

Phospholipase A2 Receptor

Synonyms:

PLA2R

Immunogen:

Peptide

Isotype:

IgG

Subcellular location:

Cell membrane

Purity:

Affinity purification

Form:

Liquid

Storage Buffer:

PBS with 0.02% sodium azide, 100 µg/ml BSA and 50% glycerol.

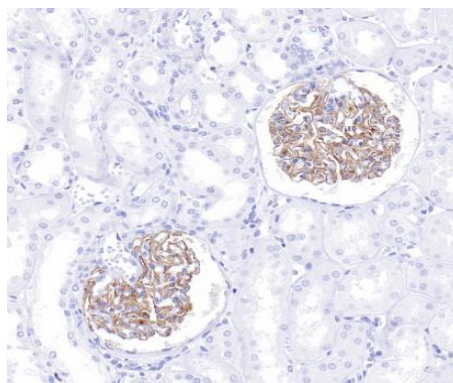
Storage:

Store at -20 °C for one year.

Experimental procedure:

Antigen retrieval: Citrate buffer (pH 9.0), Medium high heat for 8 minutes, stop for 7 minutes, medium high heat for 8 minutes. Incubate antibody, 4°C overnight. Secondary antibody: Poly-HRP Goat Anti-Rabbit & Mouse Universal Secondary Antibody, RT, 1h.

Images:



Sample: Human kidney tissue, 4% PFA 12-24h

Source of Reagents:

发表[中文论文]请标注: PLA2R(B32181R)由杭州浩克生物技术有限公司提供;

发表[英文论文]请标注: PLA2R(B32181R) were kindly provided by Hangzhou Haoke Biotechnology Co., Ltd.