

CK5&6 Recombinant antibody

Cat:B32165R

Company: Haokebio

Uniprot ID:P13647

Applications: IHC:1:100-1:200

Organism:Rabbit

IHC-Polymer:1:400-1:800

Species reactivity:Human

TSA:1:500-1:1000

Background:

Cytokeratin 5&6 (CK5&6) is a type of basal cell cytokeratin. It is positively expressed in basal cells of squamous epithelium and ductal epithelium in normal tissues, as well as in some cells of the squamous epithelial germinative layer, myoepithelial cells, and mesothelial cells, while negatively expressed in glandular epithelial cells. This antibody is mainly used for the differential diagnosis of squamous cell carcinoma from adenocarcinoma, and mesothelioma from adenocarcinoma. It can also be used to distinguish between benign and malignant proliferations of ductal epithelium.

Protein full name:

Cytokeratin 5 and Cytokeratin 6

Synonyms:

CK5/6, CK5&6

Immunogen:

Peptide

Isotype:

IgG

Subcellular location:

Cytoplasm

Purity:

Affinity purification

Form:

Liquid

Storage Buffer:

PBS with 0.02% sodium azide, 100 µg/ml BSA and 50% glycerol.

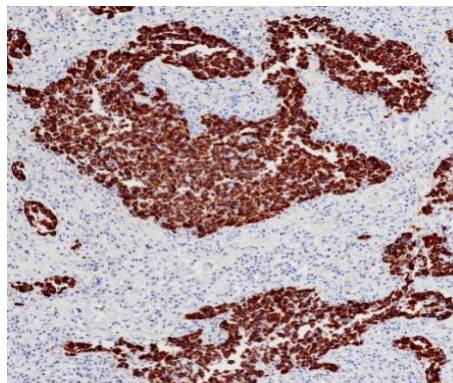
Storage:

Store at -20 °C for one year.

Experimental procedure:

Antigen retrieval: Citrate buffer (pH 9.0) , Medium high heat for 8 minutes, stop for 7 minutes, medium high heat for 8 minutes. Incubate antibody, 4°C overnight. Secondary antibody: Poly-HRP Goat Anti-Rabbit & Mouse Universal Secondary Antibody, RT, 1h.

Images:



Sample: Human cervical cancer tissue, 4% PFA 12-24h

Source of Reagents:

发表[中文论文]请标注:CK5&6(B32165R)由杭州浩克生物技术有限公司提供;

发表[英文论文]请标注:CK5&6(B32165R) were kindly provided by Hangzhou Haoke Biotechnology Co., Ltd.