

TLE1 Recombinant antibody

Cat:B32152R

Company: Haokebio

Uniprot ID:Q04724

Applications: IHC:1:100-1:200

Organism:Rabbit

IHC-Polymer:1:400-1:800

Species reactivity:Human

TSA:1:500-1:1000

Background:

TLE1 binds to a variety of transcription factors. It can inhibit gene expression regulated by NF- κ B, and also suppress transcriptional activation mediated by FOXA2, CTNNB1 in the Wnt signaling pathway, and members of the TCF family. It enhances transcriptional repression mediated by FOXG1/BF-1 and HES1. TLE1 is widely expressed in normal and cancerous tissues. It is commonly used in the diagnosis of synovial sarcoma.

Protein full name:

transducin-like enhancer of split 1

Synonyms:

E(Sp1) homolog, ESG, ESG1, GRG1, TLE1

Immunogen:

Peptide

Isotype:

IgG

Subcellular location:

Nucleus

Purity:

Affinity purification

Form:

Liquid

Storage Buffer:

PBS with 0.02% sodium azide, 100 μ g/ml BSA and 50% glycerol.

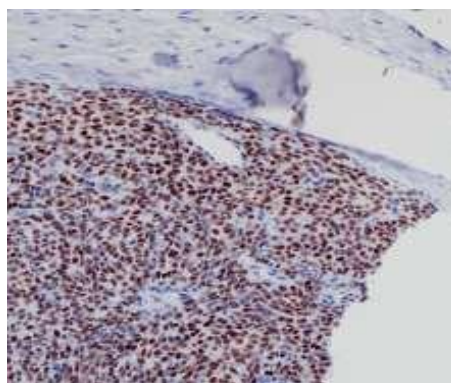
Storage:

Store at -20 °C for one year.

Experimental procedure:

Antigen retrieval: Citrate buffer (pH 9.0) , Medium high heat for 8 minutes, stop for 7 minutes, medium high heat for 8 minutes. Incubate antibody, 4°C overnight. Secondary antibody: Poly-HRP Goat Anti-Rabbit & Mouse Universal Secondary Antibody, RT, 1h.

Images:



Sample: Human synovial sarcoma tissue, 4% PFA 12-24h

Source of Reagents:

发表[中文论文]请标注:TLE1(B32152R)由杭州浩克生物技术有限公司提供;

发表[英文论文]请标注:TLE1(B32152R) were kindly provided by Hangzhou Haoke Biotechnology Co., Ltd.